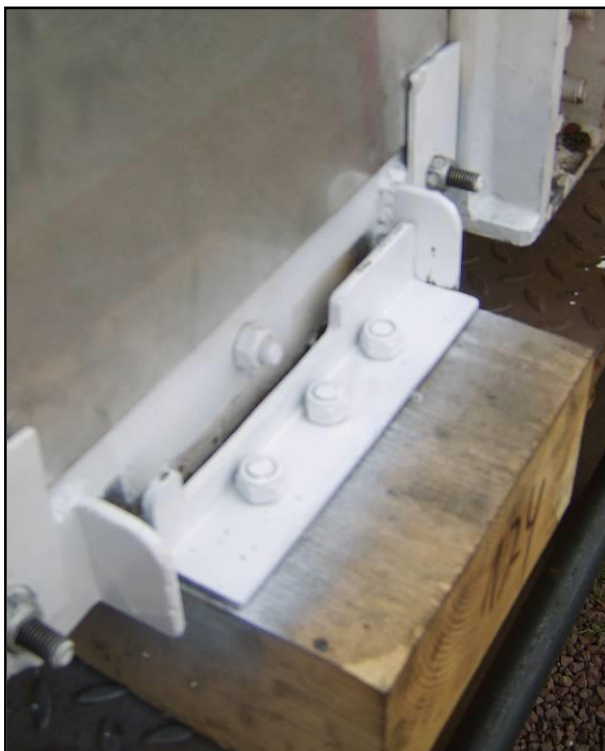


WAGON TYPE	COMMODITY
YWA Salmon	KIROW 250 SLEEPER BEAM
Carrying Capacity : For Exact Loading Limits see Individual Wagon on TOPS. Sleeper Beam Weight 5000 kg	
Load Positioning : Beam to be loaded centrally over each of the two wagon bolsters. Beam shall locate inside the side restraint brackets located on each bolster (total 4)	
Stanchions : N/A	
Bolsters : Two temporary bolsters fitted at position 2 and 4	
Dunnage : N/A	
Unsecured Loads : Not permitted	
Securing Equipment : Four direct straps (with wear sleeves) to be positioned over the beam at the designated points where there is a vertical part of the beam frame. One winch to winch and three hand ratchet tensioners. It is acceptable to secure to the wagon frame work underneath the strap box, see picture.	
Voids : N/A	
Doors/ Sides : N/A	
Special Equipment: Two side brackets need to be present and undamaged at each side of the beam so as to engage onto the bolster side restraint bracket. (prevents longitudinal movement)	
Loading Competency : LE SV	
Safety : Wear P.P.E at all times.	



Beam and bolster brackets



Securing at vertical frame work